

oakheart



£180,000

Offers Over
Railway Street, Braintree

Nestled in the heart of Braintree, this attractive ground floor maisonette offers exceptional convenience and comfort. The property boasts an enviable location, mere moments from the railway station with seamless connections to London Liverpool Street, complemented by proximity to local amenities and a quick drive to Braintree Freeport's extensive shopping and dining precinct.

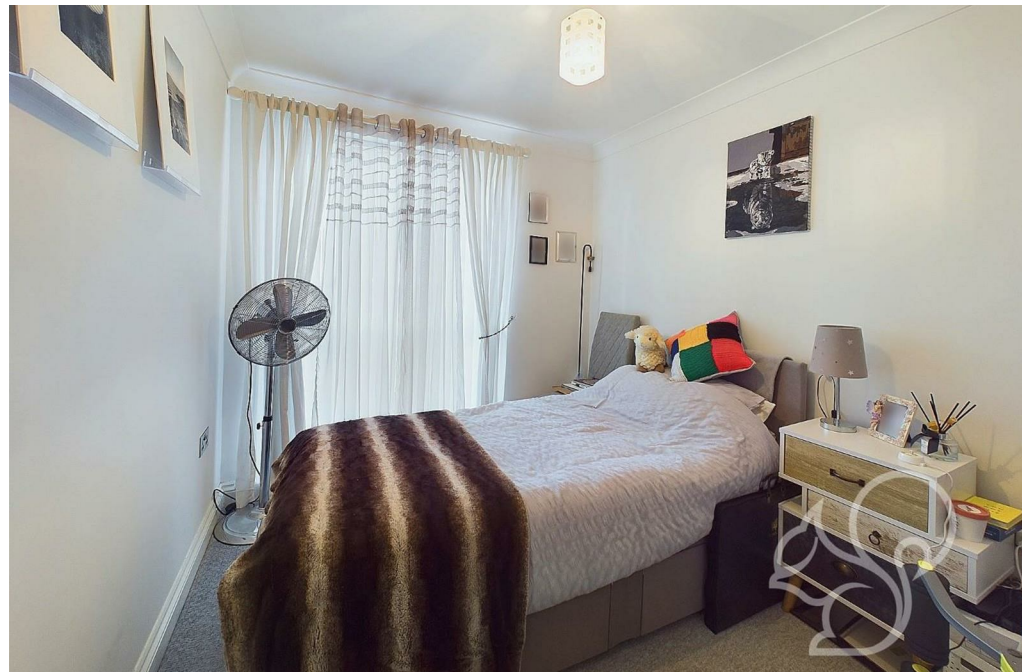
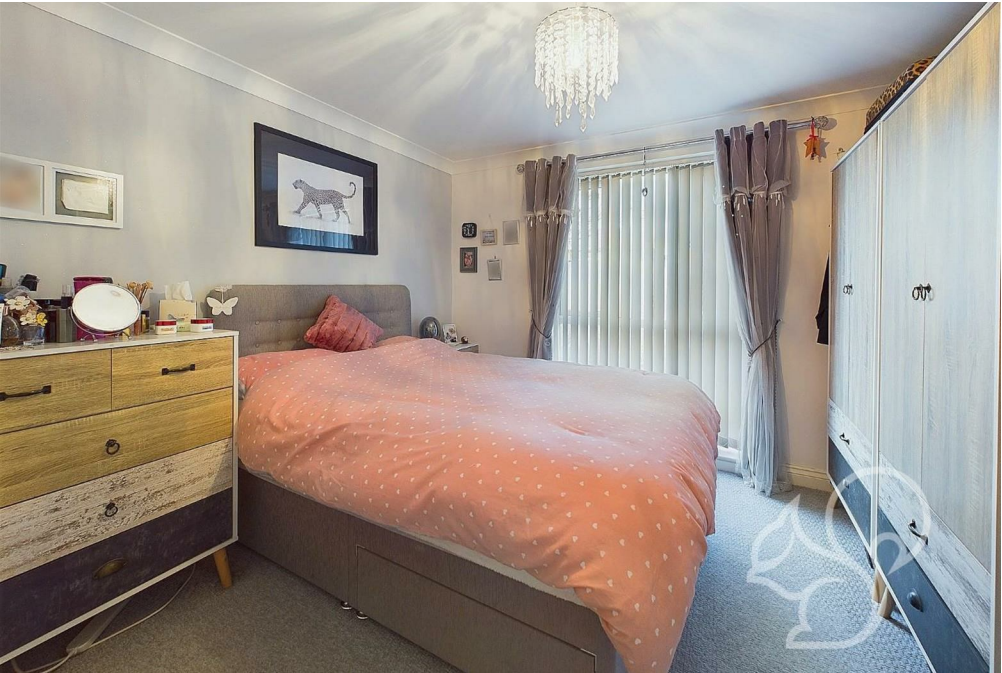
The home impresses with its thoughtfully designed interior, centered around a generously proportioned kitchen-lounge-diner featuring contemporary appliances. Two well-proportioned double bedrooms provide ample sleeping accommodation, while the bathroom is equipped with a luxurious large bath and a sleek chrome heated towel rail. A spacious hallway enhances the sense of openness, and expansive floor-to-ceiling windows flood

the living spaces with natural light. Clever storage solutions are integrated throughout the property, ensuring practical living.

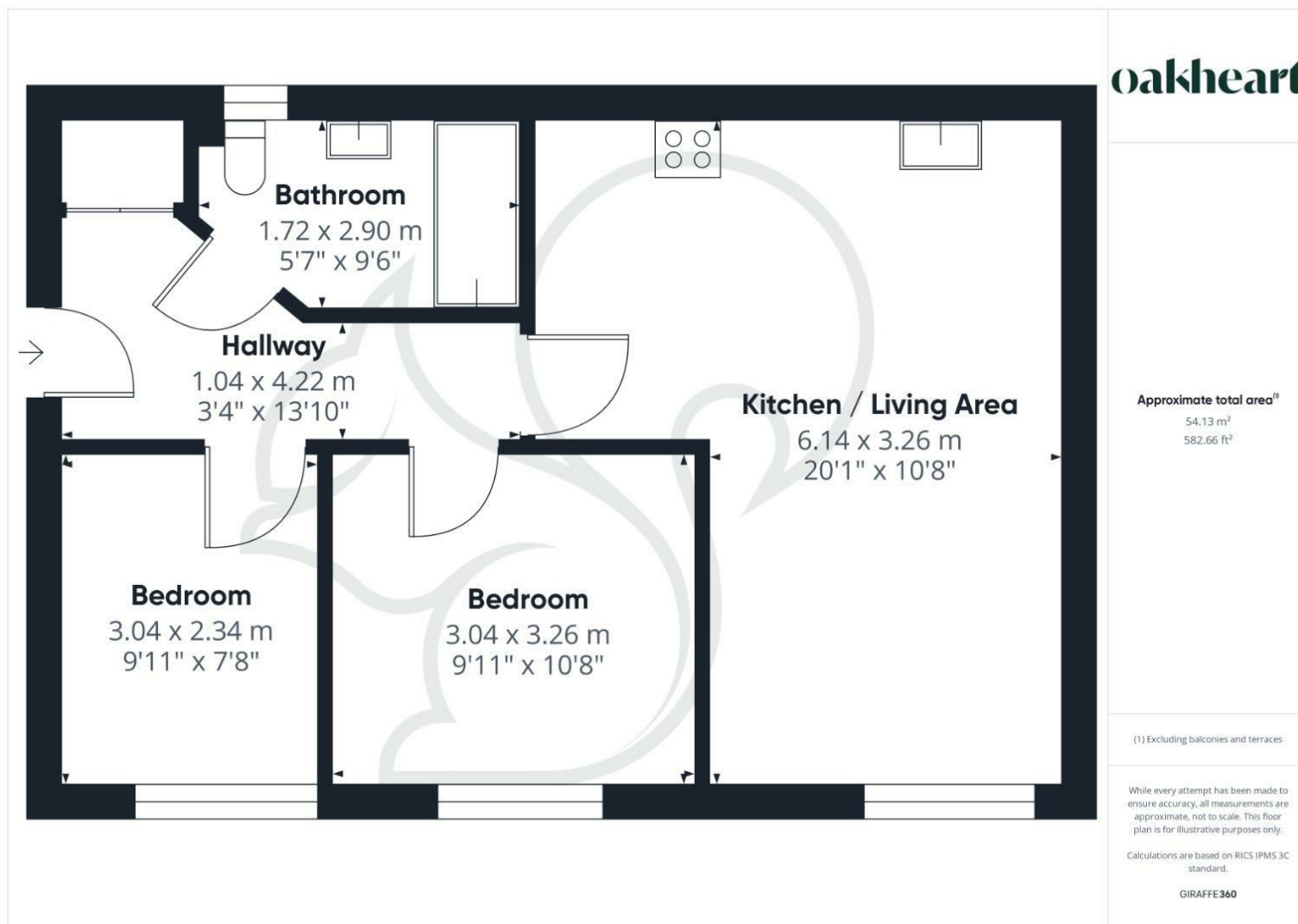
Residents can enjoy access to a charming communal rear garden, meticulously laid to lawn, offering a delightful outdoor space. An allocated parking space provides convenient and secure vehicle accommodation, adding to the properties appeal.












Local Authority:
Braintree Council

Tenure:
Leasehold

Council Tax Band:
B

Energy Efficiency Rating

	Current	Potential
<i>Very energy efficient - lower running costs</i>		
(92 plus) A		
(81-91) B		
(69-80) C		
(55-68) D		
(39-54) E		
(21-38) F		
(1-20) G		
<i>Not energy efficient - higher running costs</i>		
England & Wales	EU Directive 2002/91/EC 	

Agents Note: Whilst every care has been taken to prepare these particulars, they are for guidance purposes only. All measurements are approximate and are for general guidance purposes only and whilst every care has been taken to ensure their accuracy, they should not be relied upon.

Oakheart Chelmsford
01245 800181
chelmsford@oakheart.co.uk
20 Victoria Road, Chelmsford, Essex, CM1 1PA

oakheart